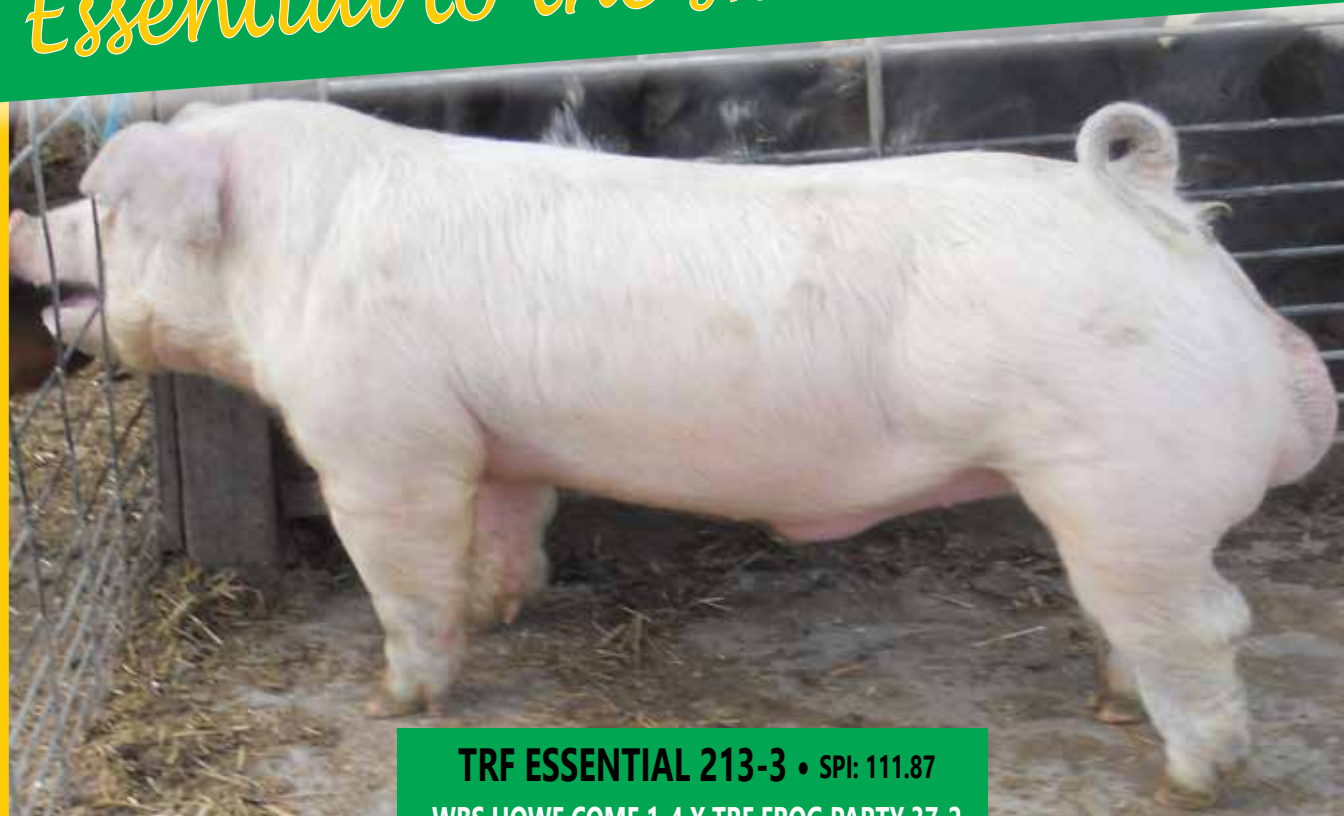


RAKE GENETICS

Essential to the swine industry



TRF ESSENTIAL 213-3 • SPI: 111.87
WBS HOWE COME 1-4 X TRF FROG PARTY 37-2



*Essential for
show pig power and look!*



*Essential for sustainability!
213's Dam/2nd Litter*



*Essential to
meet the challenge!*

Semen for sale from 213-3 and 20+ ESSENTIAL herd sires of the Berkshire, Chester White, Duroc, Hampshire, Hereford, Poland China, Spotted, Tamworth and Yorkshire breeds.

LIKE US ON



RAKE GENETICS

Tom & Diane Rake

WISCONSIN BOAR STORE

6840 Schumacher Rd. • Waunakee, WI 53597

Tom Cell (608) 219-7467

www.rakegenetics.com

CELEBRATING

50

YEARS

IN THE PUREBRED
SWINE BUSINESS
1969-2019

**SEMEN
BREEDING
STOCK
PROJECT PIGS**